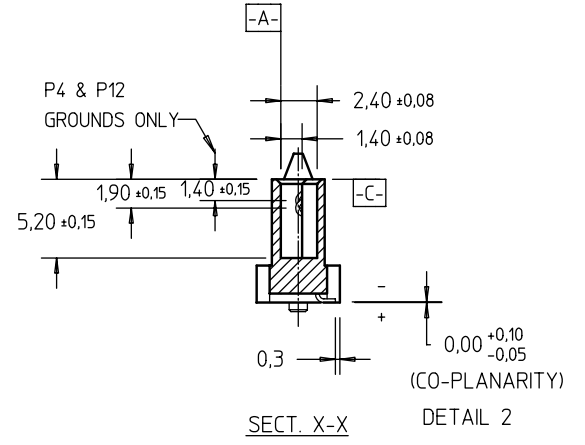
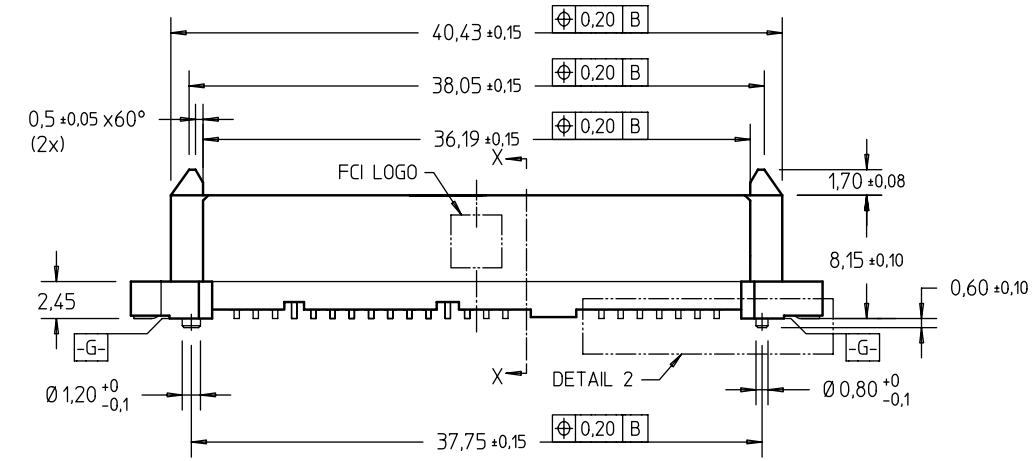
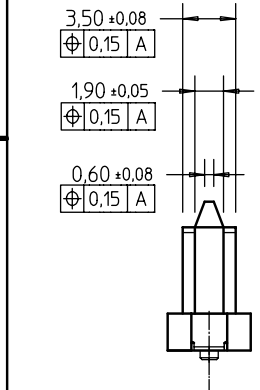
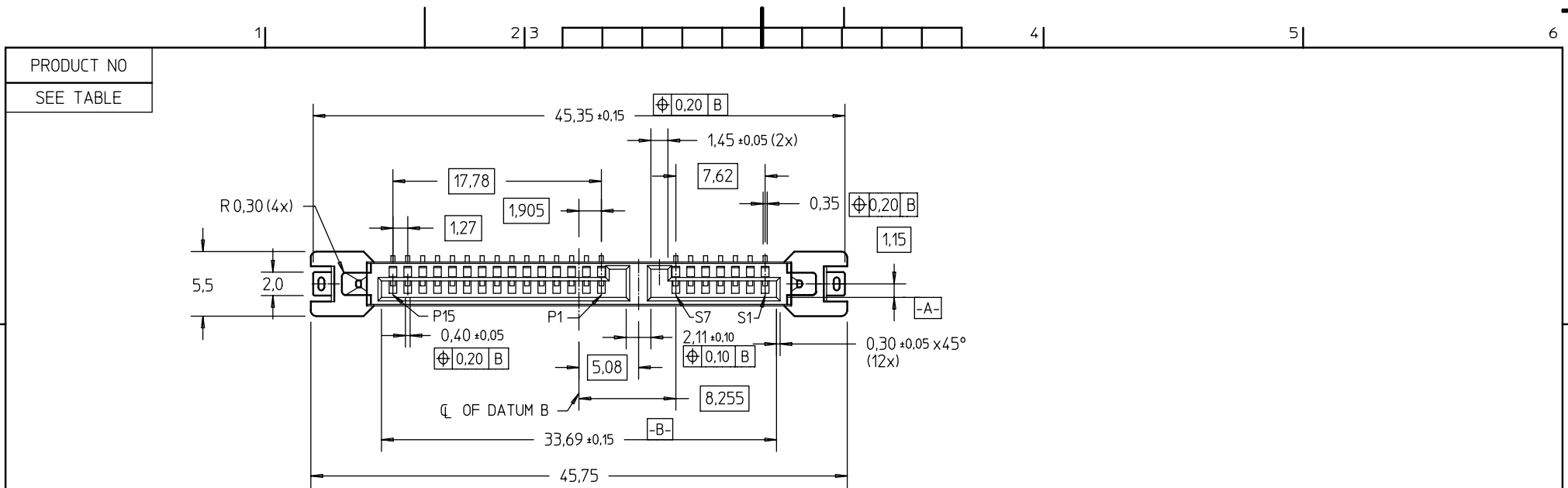


FCI CONFIDENTIAL



This document is the property of and embodies CONFIDENTIAL and PROPRIETARY information of FCI. No part of the information shown on this document may be used in any way or disclosed to others without the written consent of FCI. Copyright FCI.



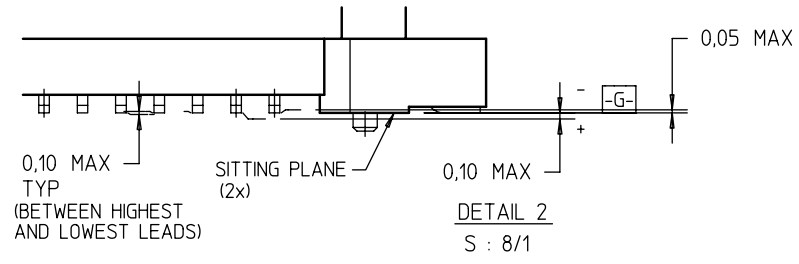
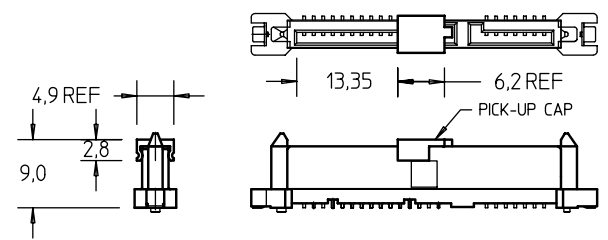
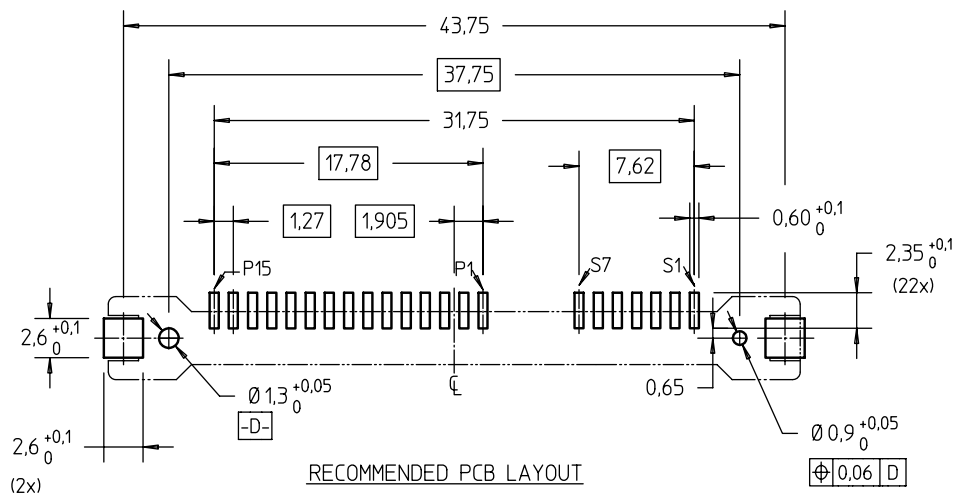
mat'l. code		surface ISO 1302		tolerance ISO 406 ISO 1101		projection ISO 1302		product family S-ATA	
ltr	ecn no	dr	date	tolerances unless otherwise specified		mm		title S-ATA COMB RECEP VERTICAL SMT TYPE ASSY	
A	S04-0027	GLL	2/27/04	angles	linear	= ±0,20		sheet 1 of 2 size A4	
B	S04-0078	GLL	4/28/04	± 2°		scale 2 : 1		dwg no 10029065	
C	S05-0035	GLL	2/7/05	dr	GL L00	2/27/04	type CUSTOMER Drawing		
D	S05-0359	GLL	12/7/05	enr	GL L00	2/27/04	sheet 1 of 2 size A4		
E	S06-0188	GLL	5/30/06	chr	GL L00	5/30/06	type CUSTOMER Drawing		
				appd	JOEY NG	5/30/06			
sheet	revision	E	E						
index	sheet	1	2						

FCI CONFIDENTIAL



This document is the property of and embodies CONFIDENTIAL and PROPRIETARY information of FCI. No part of the information shown on this document may be used in any way or disclosed to others without the written consent of FCI. Copyright FCI.

PRODUCT NO	REMARK
10029065-001LF	-
10029065-001CLF	SEE NOTE ④
10029065-001C-TRLF	SEE NOTE ⑨



- NOTES:**
- THIS PRODUCT MEETS THE SATA SPEC REV. 1.0a
  - MATERIAL:**
    - HOUSING : HIGH TEMP TERMOPLASTIC, UL 94V-0  
COLOR : BLACK
    - TERMINAL : COPPER ALLOY
    - HOLD DOWN : COPPER ALLOY
  - FINISH :**
    - TERMINAL : 30u" Au PLATING (CONTACT POINT) OVER 50u" NICKEL
    - SOLDER TAIL : 50u" min Sn OVER 50u" NICKEL
    - HOLD DOWN : 50u" min Sn OVER 50u" NICKEL
  - PART WITH PICK-UP CAP, P/N XXXXXXXX-XXXC\_LF
  - THE STD PACKAGING IS IN TRAY.
  - THE HOUSING WILL WITHSTAND EXPOSURE TO 260°C PEAK TEMPERATURE FOR 10 SECONDS IN A CONVECTION, INFRA-RED OR VAPOR PHASE REFLOW OVEN.
  - THIS PRODUCT MEETS EUROPEAN UNION DIRECTIVES AND OTHER COUNTRY REGULATIONS AS DESCRIBED IN GS-22-008.
  - PART NUMBERS ENDING IN "LF" MEANS FOR NOTE 7 LEAD FREE IDENTIFICATION
    - P/N XXXXXXXX-XXXLF IS EQUIVALENT TO PREVIOUS P/N XXXXXXXX-XXX
    - P/N XXXXXXXX-XXXCLF IS EQUIVALENT TO PREVIOUS P/N XXXXXXXX-XXXC
  - FOR TAPE & REEL PACKAGING, SUFFIX "-TR" ADDED.  
P/N XXXXXXXX-XXXC-TR\_LF

mat'l. code		surface <input checked="" type="checkbox"/> ISO 1302		tolerance <input checked="" type="checkbox"/> ISO 406 ISO 1101		projection		product family S-ATA	
ltr		ecn no		dr		date		title	
E								S-ATA COMB RECEP VERTICAL SMT TYPE ASSY	
		angles		linear		mm		scale 2 : 1	
		± 2°							
		dr		GL L00		2/27/04		dwg no	
		enr		GL L00		2/27/04		sheet 2 of 2	
		chr		GL L00		5/30/06		size	
		appd		JOEY NG		5/30/06		A4	
sheet index		revision sheet		1				type CUSTOMER Drawing	